



Photo: © Florian Graner

Twenty-nine species of marine mammals reside in or migrate through the sanctuary.



Photo: © Florian Graner



Photo: Mary Sue Brancato

During annual migrations, more than a million seabirds, waterfowl, and shorebirds travel along the coast.



Photo: Judy Floyd

Sea stars, anemones, and barnacles are abundant along the rocky tidepools of the Olympic Coast.



Photo: NOAA

Human presence on the Olympic Coast predates historical records and attests to Native American cultures' long and intricate relationship with the marine environment.

## Olympic Coast National Marine Sanctuary

The sanctuary is home to a rich abundance of marine mammals, seabirds, and fish, diverse populations of kelp and algae, and thriving invertebrate communities.

The area occupies a maritime cultural landscape that has supported humans since time immemorial. Stories, songs, place-names, histories, and the remnant traces—ancient villages, shipwrecks, and lighthouses—persist as reminders of the many human connections to this special place.

The vibrant contemporary communities of the Hoh Tribe, Makah Tribe, Quileute Tribe, and the Quinault Indian Nation have forged inseparable ties to the ocean, maintaining traditions of the past while they navigate the challenges of the present.

We aim to protect the Olympic Coast's natural and cultural resources through responsible stewardship, to conduct and apply research to preserve the area's ecological integrity and maritime heritage, and to promote understanding through public outreach and education.

### Resource Protection

Resource protection involves managing and fostering the responsible use and protection of sanctuary resources through conservation and sustainable practices to enhance ecosystem resilience and human well-being. This may include activities such as stewardship, regulations, permitting, incident response and contingency planning, damage assessment and restoration, and enforcement.

### Research

Science and research is used to study this complex ecosystem to promote healthy and resilient resources in the sanctuary. Scientific research involves a variety of activities, such as seafloor mapping, marine wildlife and habitat surveys, oceanographic monitoring, deep-sea exploration, and understanding human connections and services, and is often done in collaboration with partners.

### Education

Enhancing the public's awareness of natural and cultural resources is a cornerstone to the sanctuary's mission. Education and outreach programs include place-based activities, career-building opportunities, and high-quality educational experiences.



# Olympic Coast National Marine Sanctuary

## Location

From Cape Flattery to the mouth of the Copalis River, on Washington's outer coast

## Protected Area

3,188 square miles

## Designation

July 1994

## Habitats

Beaches  
Rocky shores  
Kelp forests  
Rocky reefs  
Sandy seafloor  
Open ocean  
Deep sea

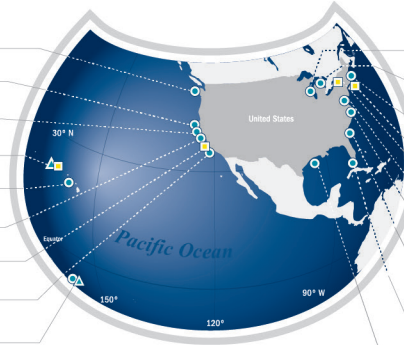
## Key Species

Ochre sea star  
Dungeness crab  
Northern sea otter  
Tufted puffin  
Orca whale  
Deep-sea coral

## NATIONAL MARINE SANCTUARY SYSTEM

### Olympic Coast

Greater Farallones  
Cordell Bank  
Papahānaumokuākea  
Hawaiian Islands Humpback Whale  
Monterey Bay  
Chumash Heritage  
Channel Islands  
American Samoa (U.S.)  
(Including Rose Atoll)



Wisconsin Shipwreck Coast  
Thunder Bay  
Stellwagen Bank  
Hudson Canyon  
Lake Ontario  
Mallows Bay-Potomac River  
Monitor  
Gray's Reef  
Florida Keys  
Flower Garden Banks

- National Marine Sanctuary
- Marine National Monument
- Proposed National Marine Sanctuary

Scale varies in this perspective. Adapted from National Geographic Maps.

## Find Us

115 East Railroad Avenue,  
Suite 301  
Port Angeles, WA 98362  
360-457-6622

## On the Web

Email: [olympiccoast@noaa.gov](mailto:olympiccoast@noaa.gov)  
<https://www.facebook.com/usolympiccoastgov/>  
Twitter: [@olympiccoast](https://twitter.com/olympiccoast)

## Office of National Marine Sanctuaries

Network of marine protected areas  
Encompasses more than 620,000 square miles  
Established October 1972

## On the Web

[sanctuaries.noaa.gov](http://sanctuaries.noaa.gov)  
[www.facebook.com/NOAAOfficeofNationalMarineSanctuaries](https://www.facebook.com/NOAAOfficeofNationalMarineSanctuaries)  
Instagram: [@noaasanctuaries](https://www.instagram.com/noaasanctuaries)  
Twitter: [@sanctuaries](https://twitter.com/sanctuaries)  
Tumblr: [@noaasanctuaries](https://www.tumblr.com/noaasanctuaries)  
YouTube: [youtube.com/user/sanctuaries](https://www.youtube.com/user/sanctuaries)

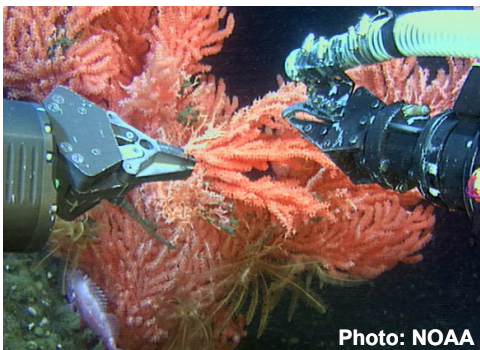


Photo: NOAA

Deep seafloor habitats feature a diversity of species such as deep sea corals and sponges.

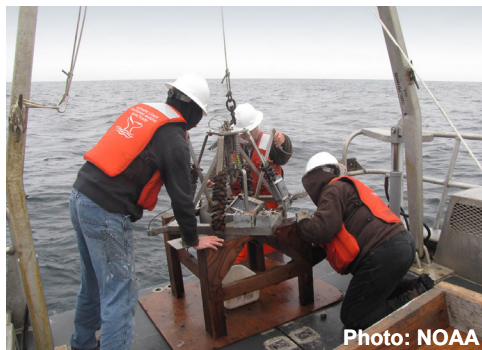


Photo: NOAA

Using specialized tools, sanctuary scientists collect data to monitor changing ocean conditions.



Photo: NOAA

Sanctuary staff provide place-based opportunities to study marine science.